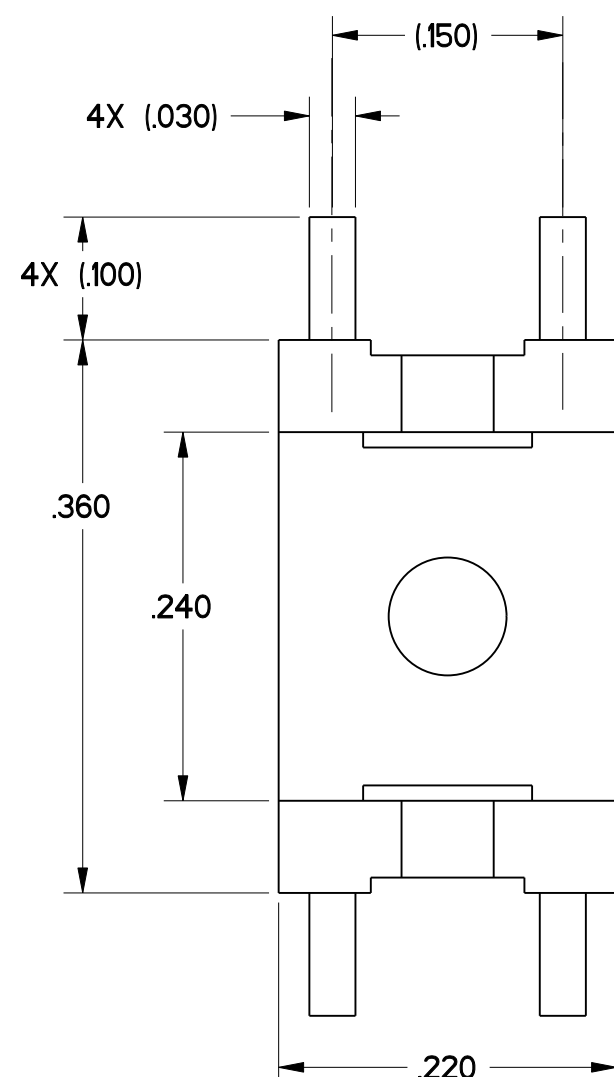
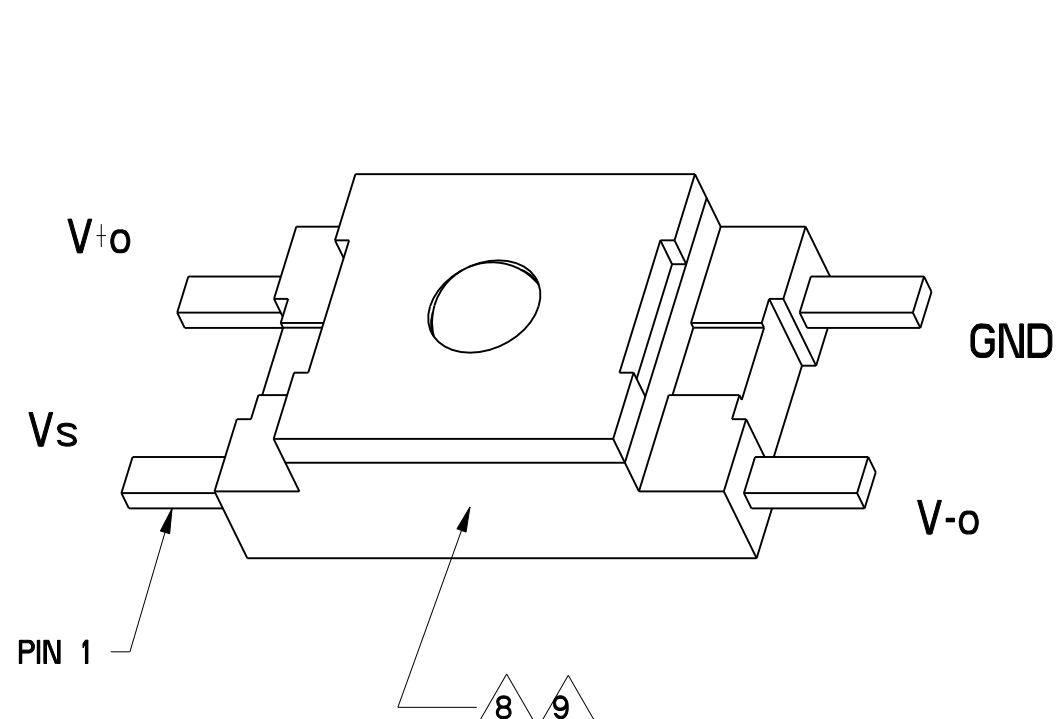
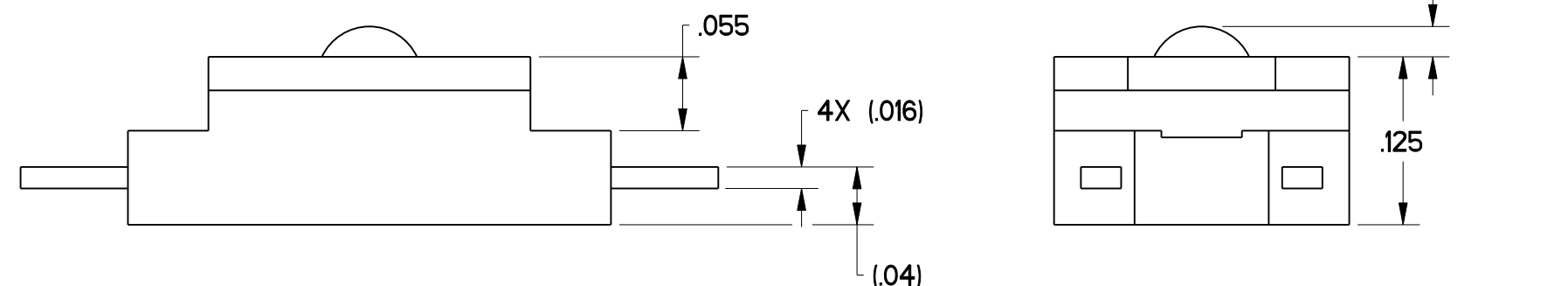


REV	DOCUMENT	CHANGED BY	CHECK
7	0044915	SSK 20OCT08	BLR



PRE-LAUNCH RELEASE



OPERATING CHARACTERISTICS at 5.00±.01 VDC, 25°C, UNLESS OTHERWISE NOTED

PARAMETER	MIN	NOM	MAX	UNITS
SUPPLY VOLTAGE	3.0	5.0	6.0	V
OPERATING FORCE	0		1500	grams
NULL OFFSET	-15	0	15	mV
SPAN Δ 4 Δ 5	150	180	210	mV
SENSITIVITY	.10	.12	.14	mV/gram

	MIN	TYP	MAX	UNITS
LINEARITY (BFSL) Δ 6	-15	±0.7	15	% SPAN
REPEATABILITY AT 300g		±15		mV
MECHANICAL HYSTERESIS		±0.5		% SPAN
NULL SHIFT Δ 7 (25°C to 0°C, 25°C to 50°C)		±0.5		mV
SPAN SHIFT (25°C to 0°C) Δ 7		5.5		% SPAN
SPAN SHIFT (25°C to 50°C) Δ 7		-5.5		% SPAN
OVER FORCE			4500	grams

	MIN	NOM	MAX	UNITS
INPUT RESISTANCE	4.0K	5.0K	6.0K	ohms
OUTPUT RESISTANCE	4.0K	5.0K	6.0K	ohms

OPERATING TEMPERATURE (-40°C to 85°C)
STORAGE TEMPERATURE (-40°C to 100°C)
MCTF 20 MILLION

- NOTES**
- 1 - DEVICE IS RATIOMETRIC TO THE SUPPLY VOLTAGE
 - 2 - DEVICE CAN OPERATE WITH CURRENT EXCITATION
 - 3 - ALL FORCE RELATED SPECIFICATIONS ESTABLISHED BY USING DEAD WEIGHT OR COMPLIANT FORCE
 - 4 - SPAN IS THE ALGEBRAIC DIFFERENCE BETWEEN OUTPUT AT MAXIMUM RATED OPERATING FORCE AND OUTPUT AT 0 GRAMS
 - 5 - SPAN VERIFIED AT 1500 GRAMS
 - 6 - MEASURED AT 1500 GRAMS
 - 7 - TEMPERATURE ERROR IS CALCULATED WITH RESPECT TO 25°C
 - 8 - LASER BRAND CATALOG LISTING AND DATE CODE ON THIS SURFACE. PACKING STYLE IS NOT LASER BRANDED ON PRODUCT
 - 9 - PIN 1 IS DESIGNATED BY THE LASER-MARKED SURFACE
 - 10 - MAXIMUM PEAK SMT REFLOW TEMPERATURE OF 260°C [500°F] FOR 10 SECONDS.
 - 11 - MANUAL SOLDERING RECOMMENDATION: 5 SECONDS AT 315°C PER LEAD
 - 12 - NOMINAL DIMENSION AND TOLERANCE APPLY IN BALL-UP ORIENTATION ONLY

CATALOG LISTING	PRODUCT CODE	COLOR	LASER BRAND
FSS1500NSB	DXF2004	BLACK	FS1500NS
FSS1500NSR	DXF2005	BLACK	FS1500NS
FSS1500NST	DXF2006	BLACK	FS1500NS

CATALOGING SYSTEM

FS S 1500 N S T xx

PACKAGE STYLE _____
(S) SURFACE MOUNT

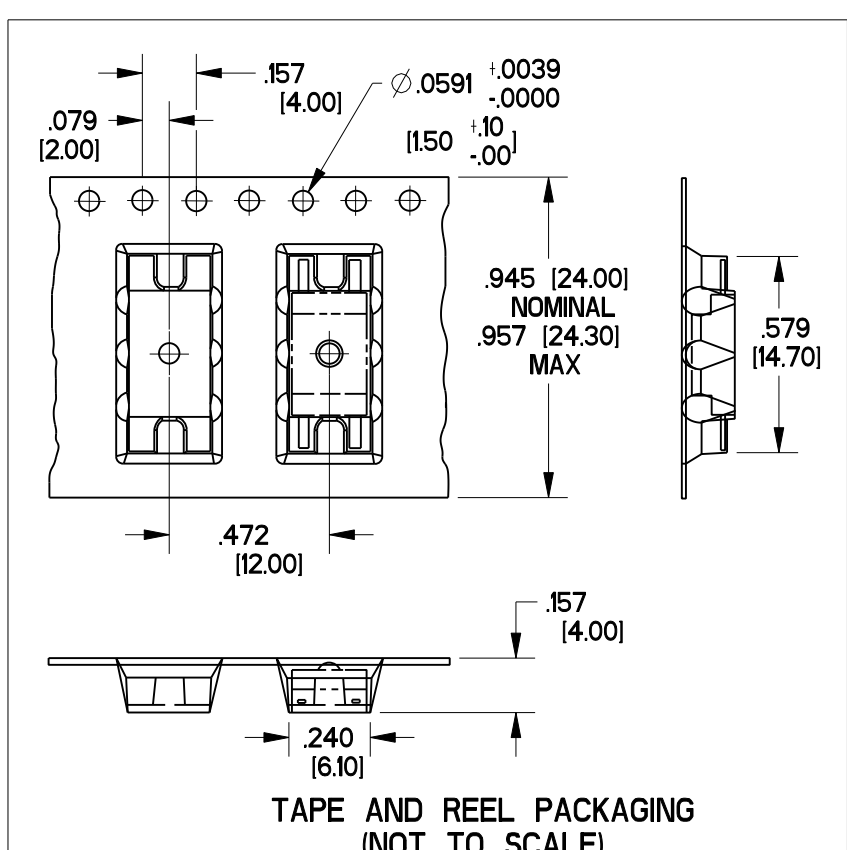
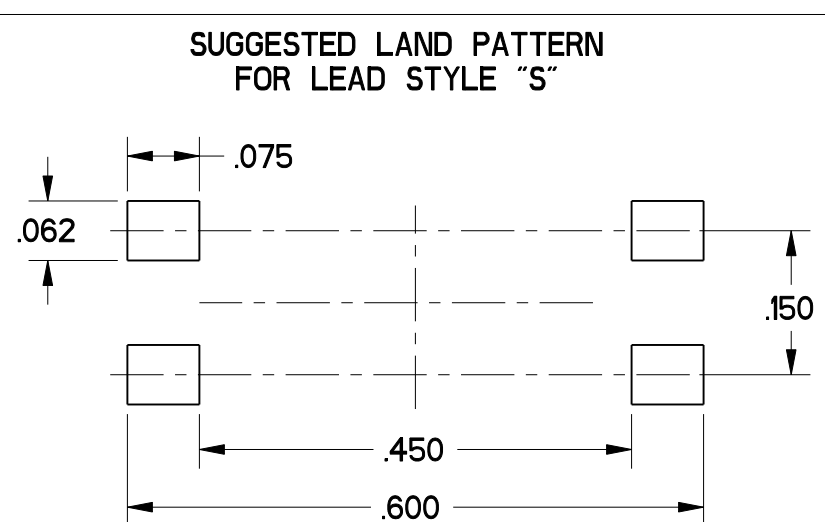
OPERATING FORCE RANGE _____
(1500) 1500 GRAMS

TEMP COMPENSATION _____
(C) COMPENSATED
(N) NON-COMPENSATED

LEAD STYLE _____
(G) GULL WING
(S) STRAIGHT

PACKING OPTION _____
(B) BLISTER PACK
(R) TAPE AND REEL
(T) TUBE

SPECIAL FEATURE, BLANK = STANDARD _____



UNLESS OTHERWISE SPECIFIED TOLERANCES ARE:		<input checked="" type="checkbox"/> US (inch) CUSTOMARY	<input type="checkbox"/> SI (mm) METRIC	DRAWN	SAV	27JUL04	Honeywell
NO PLACE	X	±.040	±1	CHECK	SAV	27JUL04	
ONE PLACE	.X	±.030	±0.4	THIS DRAWING COVERS A PROPRIETARY ITEM AND IS THE PROPERTY OF HONEYWELL. THIS DRAWING IS NOT TO BE COPIED OR USED WITHOUT THE PERMISSION OF HONEYWELL.			
TWO PLACE	.XX	±.015	±0.15				
THREE PLACE	.XXX	±.005	±				
ANGLES		±	±				
RAW MATERIAL-COMMERCIAL STANDARD				THIRD ANGLE PROJECTION			
				DIMENSIONS ARE TO BE MET BEFORE PROTECTIVE COATINGS ARE APPLIED			
3D PTC		ASME Y14.5M-1994		DRAWING NAME		REV	
				FS SERIES CHART 1		7	
SCALE		8:1		WEIGHT		SHEET 1 OF 1	